

shadac NEWSLETTER

STATE HEALTH ACCESS DATA ASSISTANCE CENTER

2018 Fall Data Release Review

October 2018: Over the last month, we've seen the release of insurance coverage estimates from the 2017 American Community Survey (ACS), the 2017 Current Population Survey (CPS), and the first-quarter 2018 National Health Interview Survey (NHIS). SHADAC has been actively tracking these releases and interpreting the new numbers to increase their accessibility. The following are highlights and resources from SHADAC's data release monitoring activities.

Data Release Highlights

Webinar Recording Available: SHADAC and Census Bureau Experts Discuss New Health Insurance Coverage Data from the ACS and CPS



During SHADAC's [annual data release webinar](#) on September 18th, U.S. Census Bureau experts Sharon Stern and Edward Berchick provided an overview of 2017 health insurance data from the ACS and the CPS. Ms. Stern and Dr. Berchick, with SHADAC Investigator Dr. Kathleen Call, discussed the new national and state coverage estimates, how to access estimates via Census reports and [American FactFinder](#), and how to use estimates from each survey. [Access the webinar slides, recording, and supporting materials.](#)

Brief: Comparing Federal Government Surveys That Count the Uninsured (2018 Update)



The 2018 update to SHADAC's annual brief, "[Comparing Federal Government Surveys That Count the Uninsured](#)," is now available. In this brief, SHADAC researchers present current and historical national estimates of uninsurance along with the most recent available state-level estimates from four federal surveys: The ACS, the CPS, the Medical Expenditure Panel Survey – Household Component (MEPS-HC), and the NHIS. Estimates for point-in-time and full-year uninsurance from these surveys are available in national and 50-state comparison tables. We also discuss the main reasons for variation in the estimates across the surveys.

New Tables and Maps Show State and County Uninsured Estimates for 2017, with Comparison Year 2016



SHADAC produced [tables](#) of state and county uninsured estimates for 2017 from the ACS using the [American FactFinder](#) tool from the U.S. Census Bureau. The tables provide uninsured rates overall and by characteristics (such as age, race/ethnicity, and poverty level) for both 2017 and comparison year 2016 for each state, as well as overall uninsured rates for all counties within each state that have a population greater than 65,000. [Also available](#) are maps and tables of additional 2016 and 2017 estimates, including private and public coverage rates by state and uninsurance rates by state.

Coming soon: 5-Year State and County Uninsured Estimates, 2013–2017

In December, SHADAC will release released 5-year estimates of uninsurance from the ACS for the pooled years 2013–2017 for all states and counties. The 5-year ACS is created by pooling together five years of ACS data to produce estimates for areas and subgroups with smaller populations. Tables will provide state-level uninsured rates for several characteristics (such as age, race/ethnicity, and poverty level) for each state, along with county-level uninsured rates by age for all counties in each state. A 50-

state comparison table will also be available. Review the 5-year estimates for 2012–2016 [here](#).

Resources: Understanding and Exploring the New Estimates

On the SHADAC Blog

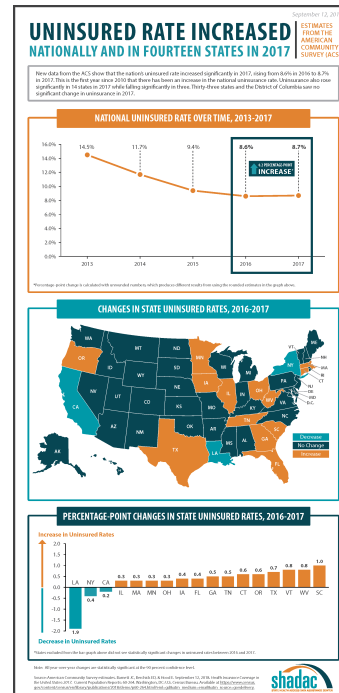
- [2017 ACS: More States Saw Declines in Private and Public Coverage, Fewer Saw Increases, than in 2016](#)
- [2017 ACS: Uninsured Rate Increased Nationally and in 14 States \(Infographic\)](#)
- [NHIS: 2018 Uninsured Rates Unchanged from 2017](#)

Recommended Reading

- [Health Insurance Coverage in the United States: 2017](#) (U.S. Census Bureau Current Population Reports)
- [Another Look at Health Insurance Coverage Rates for Young Adults](#) (U.S. Census Bureau Blog)
- [In Over Half of U.S. Counties, More Working-Age Men Than Women Are Uninsured](#) (U.S. Census Bureau Blog)

Related Resources

- [SHADAC's State Health Compare](#)
- [U.S. Census Bureau Health Insurance Website](#)
- [CPS Table Creator](#)
- [U.S. Census Bureau Statistical Testing Tool](#)
- [U.S. Census Bureau Census Data Site Preview](#) (Beta-state Data Exploration Platform)
- [Health Insurance Coverage: Early Release of Estimates From the National Health Interview Survey, January-March 2018](#) (NHIS Early Release Report)



[Forward to a friend.](#)

[unsubscribe from this list](#) | [update subscription preferences](#)

Copyright © 2018 University of Minnesota
SHADAC, 2221 University Avenue SE, Suite 345, Minneapolis, MN 55414